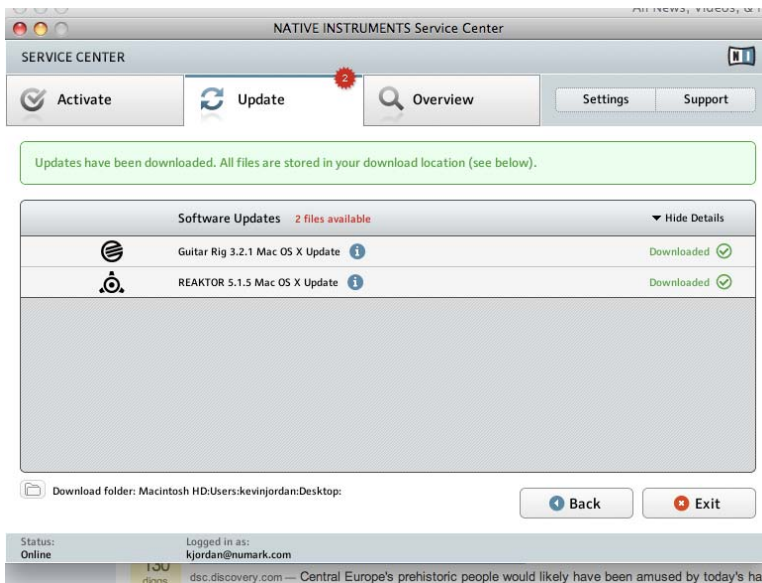
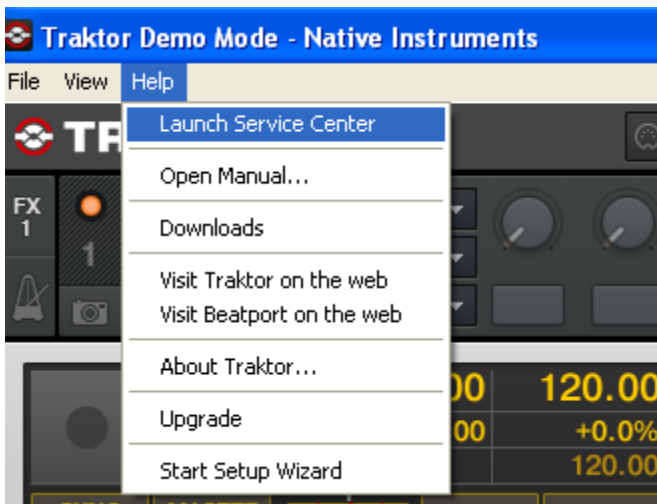


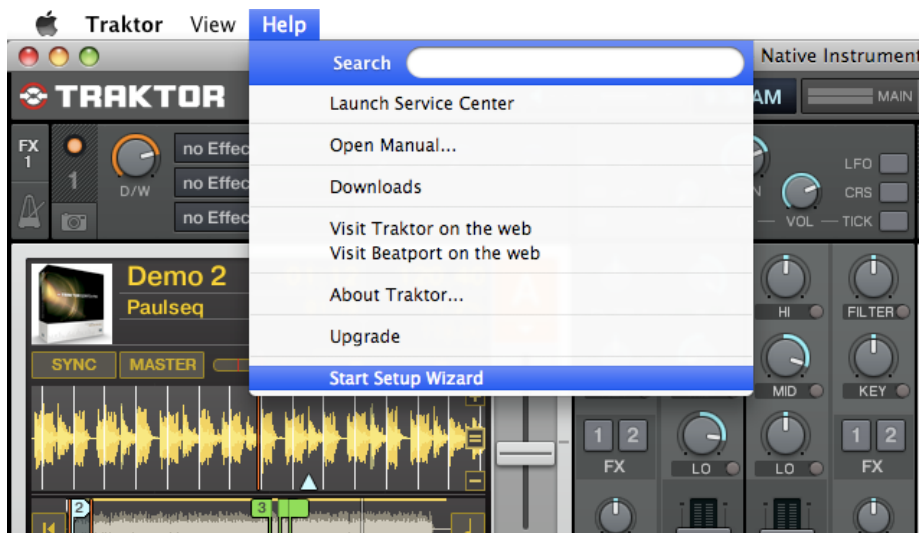
## Setting Up the MIX DECK in Traktor LE

1. Before you begin, make sure you have the latest available MIX DECK drivers for your system installed on your computer. Visit [www.numark.com/mixdeck](http://www.numark.com/mixdeck).
2. Next, make sure you have the latest version of Traktor LE installed.

Launch Traktor LE, then go to **Help > Launch Service Center**. Select the **Updates** tab and make sure you download any **Traktor** updates you see.



- Next, in Traktor LE, go to **Help > Start Setup Wizard**. In the window that opens, you will see **setup** and **device** drop down menus.



- In the window that opens, next to **Are you using a USB/FireWire controller?** select **Yes**, Then click **Next**.



5. On the next page, set **manufacturer** to **Numark**. Set **model** to **Mixdeck LE**. Click **Next**.



The screenshot shows the TRAKTOR Setup Wizard interface. At the top left is the TRAKTOR logo, and at the top right is the text "Setup Wizard". Below this is a dark box with white text: "Please select the manufacturer and model of your USB/FireWire controller from the list below. The Setup Wizard will configure TRAKTOR to work properly with your controller." There are two dropdown menus: "Choose your manufacturer:" with "Numark" selected, and "Choose your model:" with "Mixdeck LE" selected. At the bottom, there are three buttons: "Cancel", "◀ Back", and "Next ▶".

6. On the next page, next to **Are you using a NI audio interface?** select **No**. Click **Next**. The next page that is displayed will review the settings you have chosen. Click **Finish**.



The screenshot shows the TRAKTOR Setup Wizard interface. At the top left is the TRAKTOR logo, and at the top right is the text "Setup Wizard". Below this is a dark box with white text: "If you are using a Native Instruments (NI) audio interface with TRAKTOR the Setup Wizard will configure the audio routing." There is one dropdown menu: "Are you using a NI audio interface?" with "No" selected. At the bottom, there are three buttons: "Cancel", "◀ Back", and "Next ▶".

7. Next, to go into the **Preferences** menu in Traktor LE to configure the **Midi/Audio** settings.

- On Windows, go to **File > Preferences**.
- On Macintosh, go to **Traktor > Preferences**.



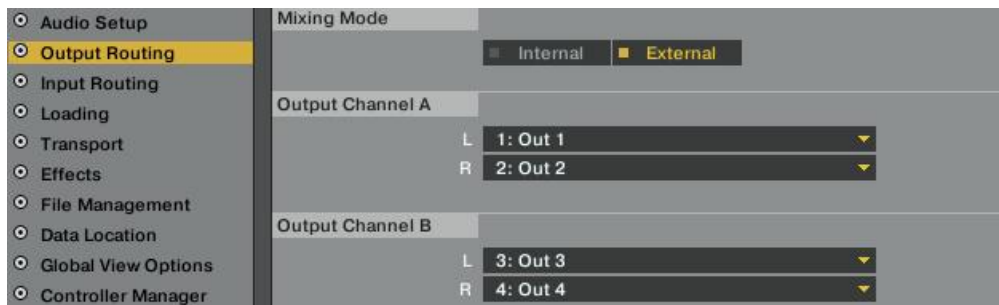
8. Next click on **Audio Setup**.

- On Windows, make sure that **MixDeck ASIO Driver** is selected.
- On a Macintosh, make sure you choose **Numark USB Audio Device** in this same drop down.



9. To set up your audio input and output configuration click on **Output Routing** on the left-hand side of the preferences window.

- Under **Mixing Mode**, choose **External**.
- Under **Output Channel A**, choose **Out 1**, and **Out 2**.
- Under **Output Channel B**, choose **Out 3**, and **Out 4**.



10. On the MixDeck hardware itself:

- Set both the left and right decks to **USB-MIDI** source mode
  1. Press **SOURCE**.
  2. Rotate the **PARAMATER** knob until the screen reads **<<SOURCE>> USB-MIDI**.
  3. Press the **PARAMATER** knob (like a button) to confirm your selection.
- On the Mixer portion of the controller, set the **CH1** source selector switch to **PC**.
- Set the **CH2** source selector switch to **PC** as well.
- Set the **CUE SOURCE** selector switch to **CH1/2**.

You should be set up and ready to go. Remember to enable CUE pressing the CUE button (shaped like a set of headphones) on each deck in the Trackor LE software by.

